

## 300 psi LPG Gauge for ThermoLazer

332653A

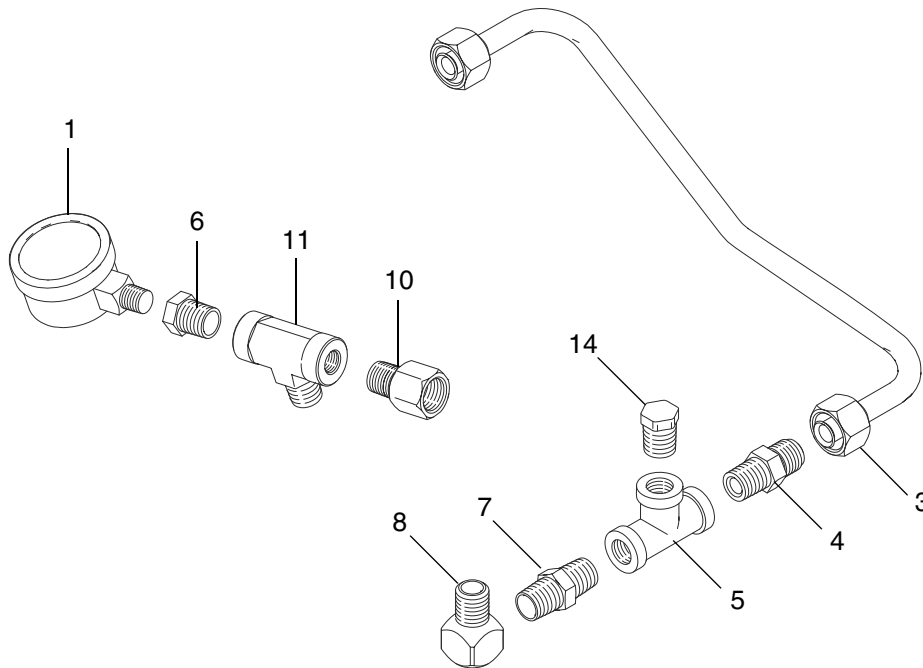
EN

### Model 24T885



#### Important Safety Instructions

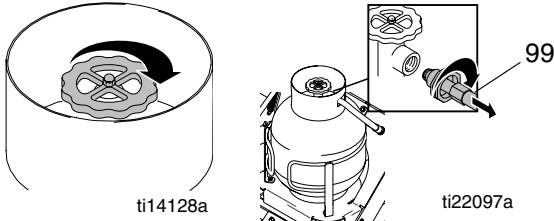
Read instruction manual 3A1319 for complete instructions and warnings. This Kit is not a substitute for reading and understanding all instruction manuals and warning labels supplied with the equipment.



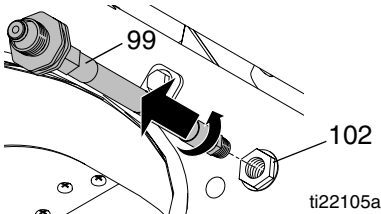
Ref.	Part	Description	Qty.
1	127257	GAUGE, pressure, 0-300 psi	1
3	16W412	TUBE, formed, gas	1
4	118484	FITTING, connector	1
5	104984	FITTING, tee, pipe	1
6	100030	BUSHING	2
7	156971	FITTING, nipple, short	1
8	100840	FITTING, elbow, street	1
10	16W635	FITTING, system filter assembly	1
11	108638	FITTING, pipe, tee	1
12	070408	SEALANT, pipe, sst (not shown)	1
13	110110	SEALANT, pipe, sst (not shown)	1
14	555459	PLUG, 1/4 npt brass hex hd	1

# 300 psi LPG Gas Gauge Installation for ThermoLazer

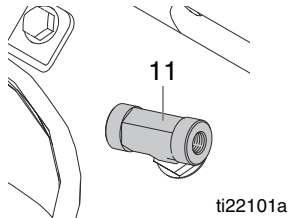
1. Close manual gas shutoff valve on propane tank, then disconnect gas supply hose (99) from propane tank.



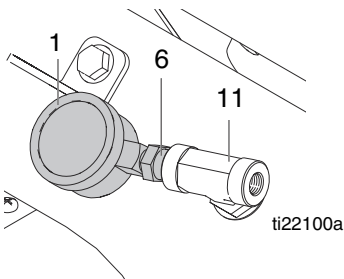
2. Unscrew gas supply hose (99) from bulkhead fitting (102).



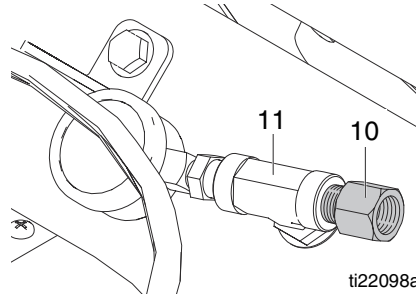
3. Apply pipe sealant to tee fitting (11) and screw into bulkhead fitting (102). Screw in until gas tight. Install tee as shown.



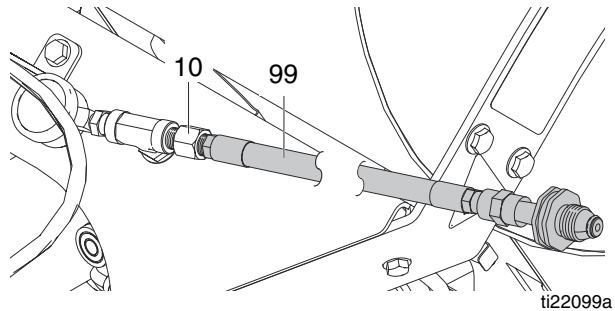
4. Apply pipe sealant to bushing (6) and screw into tee fitting (11). Screw in until gas tight. Position gauge (1) as shown.



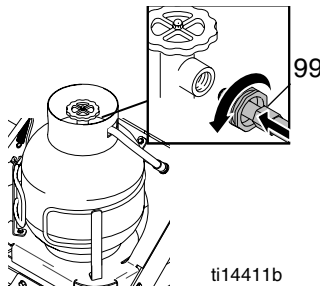
5. Apply pipe sealant to filter fitting (10) and screw into tee fitting (11). Screw in until gas tight.



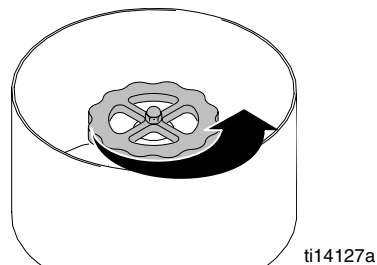
6. Apply pipe sealant to hose (99) and screw into filter fitting (10). Screw in until gas tight.



7. Connect gas supply hose (99) to propane tank.



8. Open manual gas shutoff valve on propane.



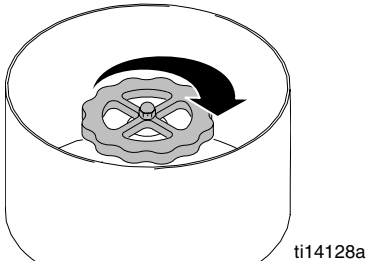
9. Check gas line for gas leaks (see ThermoLazer Operation Manual).

## NOTICE

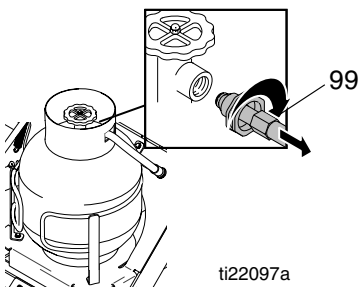
Tighten by turning bushing (6) and holding tee fitting (11). Do NOT turn gauge (1). Damage to the gauge will occur.

# Pressure Tap Installation for ThermoLazer

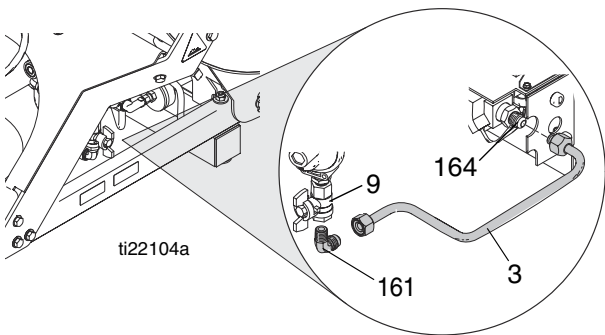
1. Close manual gas shutoff valve on propane tank.



2. Disconnect gas supply hose (99) from propane tank.

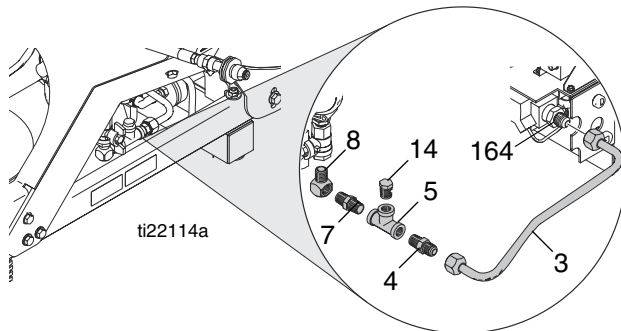


3. Remove and discard existing gas line (3) by unscrewing from elbow fitting (161) and unscrewing from gas safety valve adapter fitting (164).
4. Remove and discard existing elbow fitting (161) by unscrewing from manual gas shutoff valve (9).

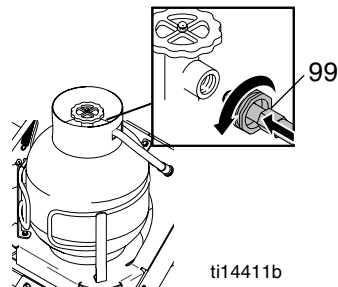


5. Apply pipe sealant to elbow fitting (8) and screw into manual gas shutoff valve (9). Screw in until gas tight. Position fitting as shown.
6. Apply pipe sealant to adapter fitting (7) and screw into tee fitting (11). Screw in until gas tight.
7. Apply pipe sealant to adapter fitting (4) and screw into tee fitting (11). Screw in until gas tight.
8. Apply pipe sealant to adapter fitting (7) and screw into elbow fitting (8). Screw in until gas tight. Position fittings as shown.

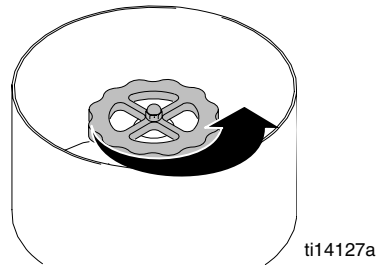
9. Install new gas line (3) by screwing into gas safety valve adapter fitting (164) and screwing into adapter fitting (4). Screw in until gas tight.



10. Connect gas supply hose (99) to propane tank.



11. Open manual gas shutoff valve on propane.



12. Check gas lines for gas leaks (see ThermoLazer Operation Manual).

*All written and visual data contained in this document reflects the latest product information available at the time of publication.  
Graco reserves the right to make changes at any time without notice.*

*For patent information, see [www.graco.com/patents](http://www.graco.com/patents).*

Original instructions. This manual contains English. MM 332653

**Graco Headquarters:** Minneapolis

**International Offices:** Belgium, China, Japan, Korea

**GRACO INC. AND SUBSIDIARIES • P.O. BOX 1441 • MINNEAPOLIS MN 55440-1441 • USA**

**Copyright 2012, Graco Inc. All Graco manufacturing locations are registered to ISO 9001.**

[www.graco.com](http://www.graco.com)  
Revision A - 2013